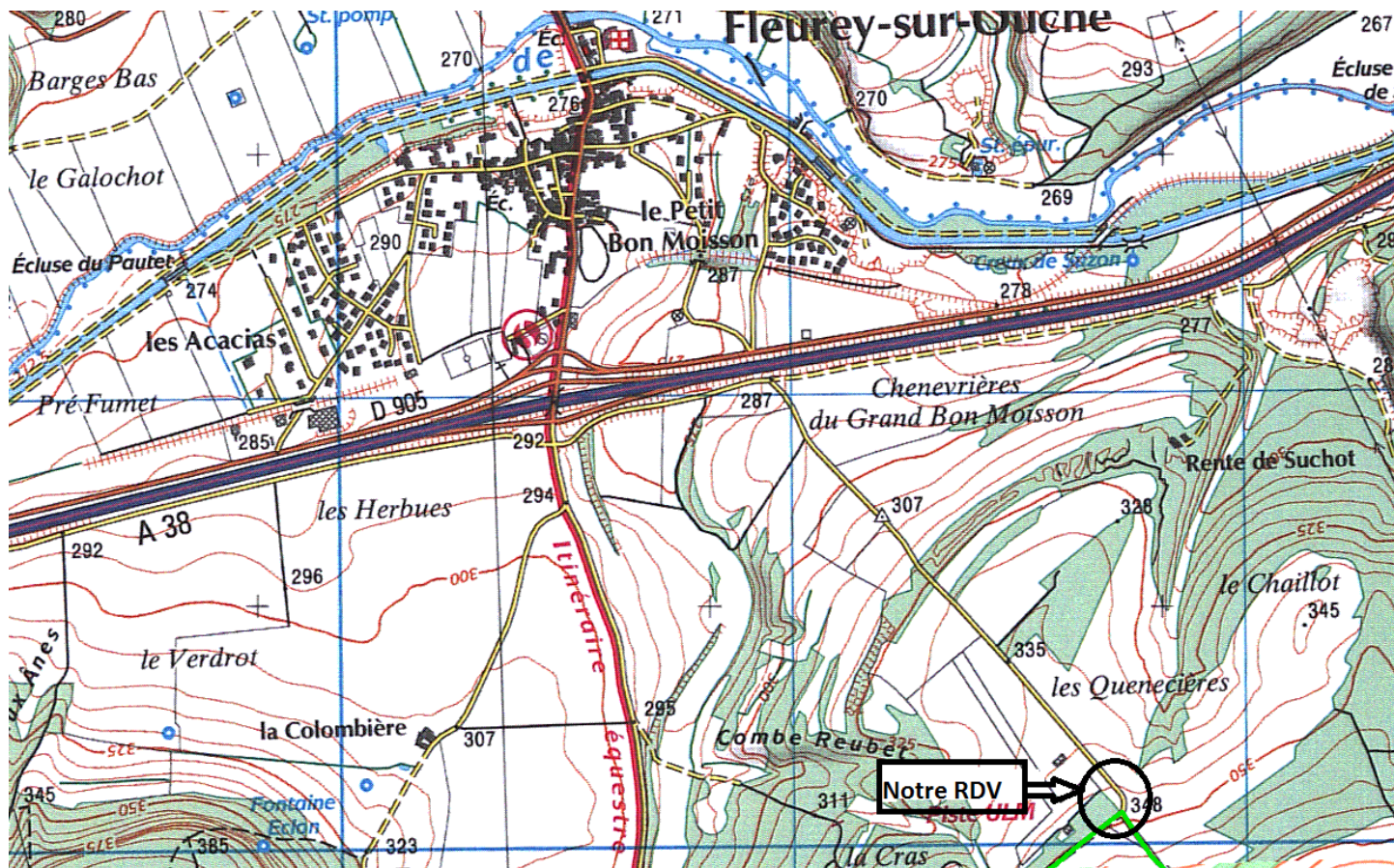
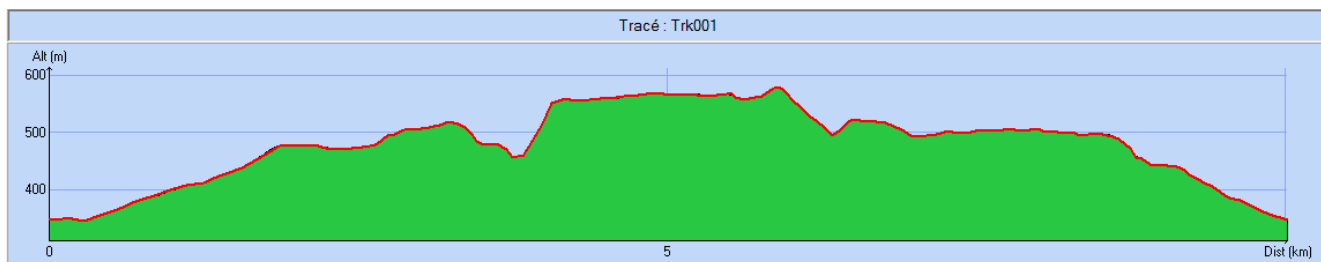
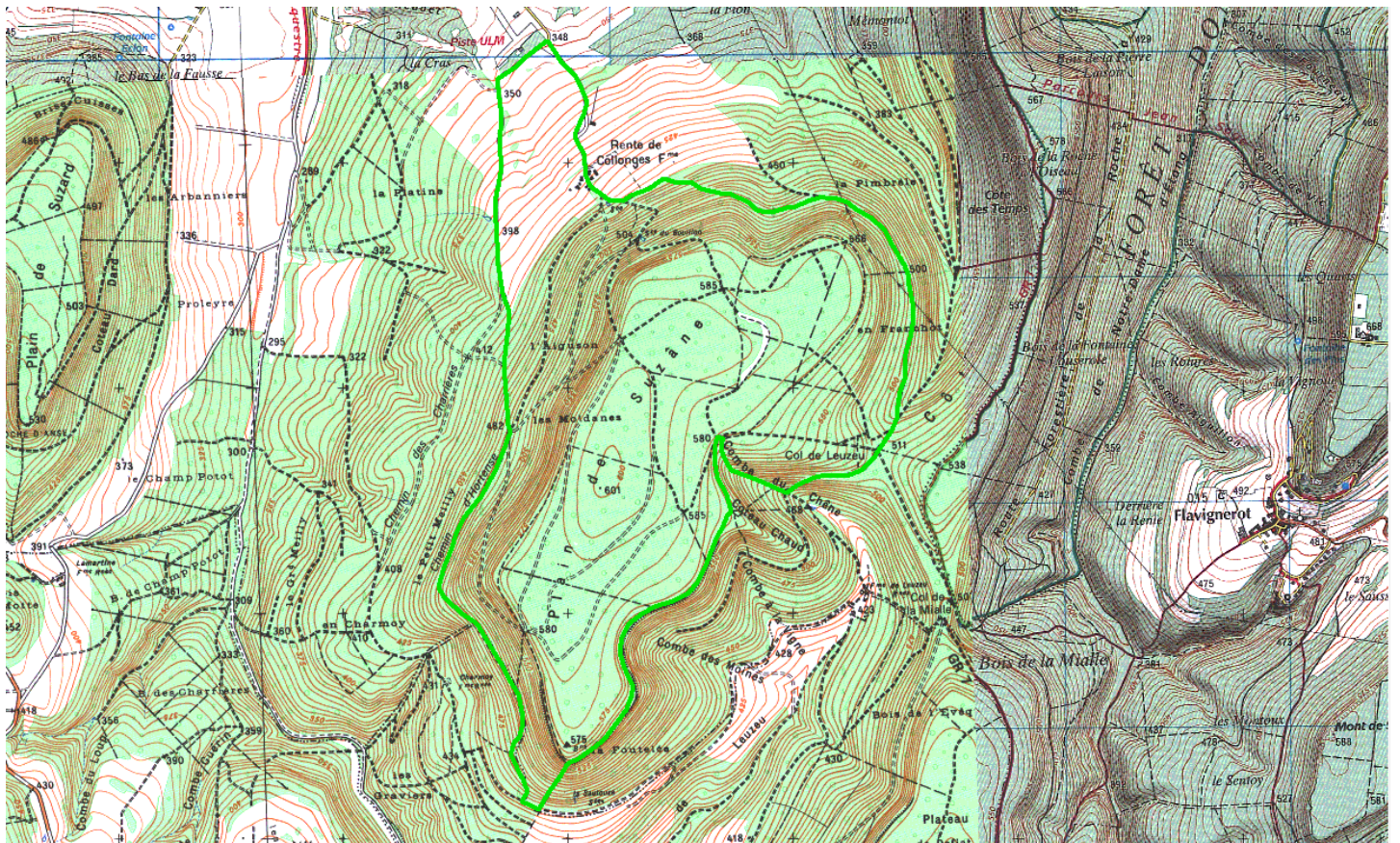


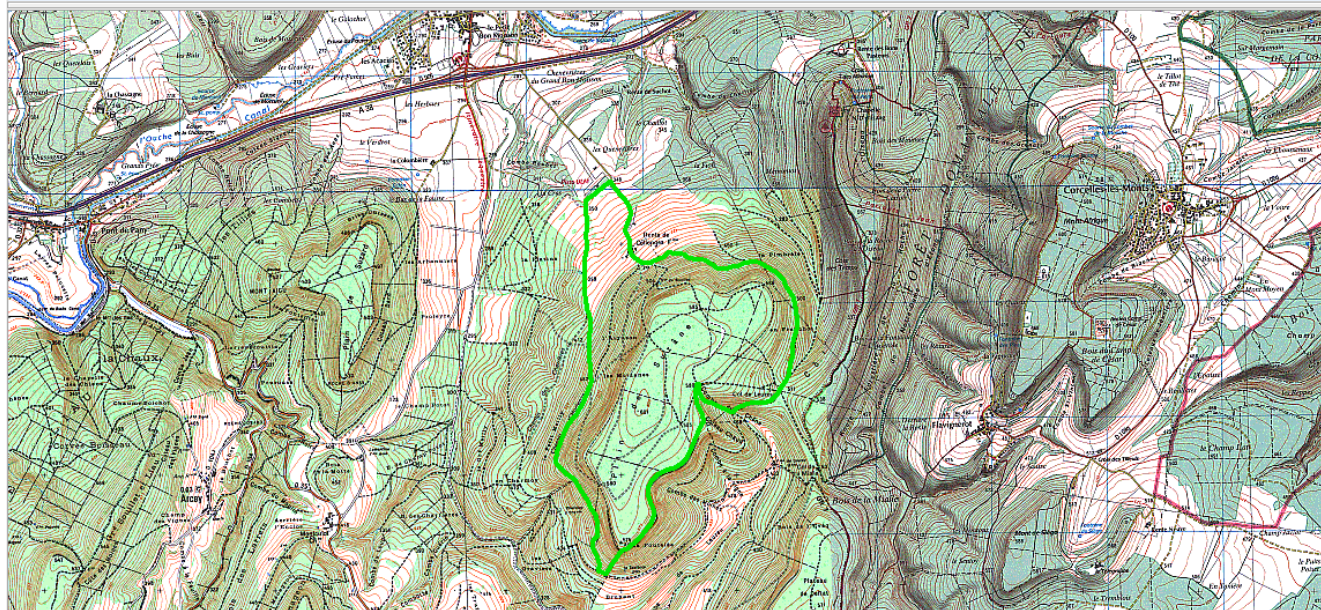
Notre RDV - 14h30 Les Quenicières, Fleurey-sur-Ouche



Parcours :



Distance totale	10.075 km
Déplacements	
Arrêts	
Durée estimée	02:30:48
Moyenne estimée	4.0 km/h
Amplitude	



Montée	384 m
Descente	384 m
Y Minimum	345 m
Y Moyen	480 m
Y Maximum	578 m